
Arm board fitting
for Technics SL1200 & 1210MKII



The DJ armboard is designed to allow you to mount any Origin Live or Rega tonearm to the 1200 & 1210 range of Technics turntables with astounding results. You will discover that the Technics is a superb deck let down only by it's existing tonearm. The armboard not only allows you to fit a true high performance arm but is itself a great performance enhancer, as it decouples the arm from external vibrations.

Please note that the Origin Live performance platter mat placed on top of the Technics rubber mat also has a very significant effect on the performance and carries a money back gaurantee if not impressed - see the Origin Live web site for details under Vinyl accessories.

Parts list (for threaded base arms)

DJ armboard (pre-assembled)
Arm packing ring
3 off M4 x 16 cap head bolts
6 off M5 washers
3 off Nylock nuts
3 mm A/F Allen key

Threaded VTA adjuster - optional

Parts list (for 3 point fixed rega arm geometry)

DJ armboard (pre-assembled)
For fitting arm to correct height on DJ armboard
3 off M3 x 25mm countersunk bolts for cross head screw driver
3 off M3 nuts
3 off M4 nuts for spacing purposes
12 off M4 spacing washers

For fitting armboard to Technics deck
3 off M4 x 16 cap head bolts
6 off M5 washers
3 off Nylock nuts
3 mm A/F Allen key

You will be supplied with the appropriate parts list for your arm but not both sets of parts.

Fitting instructions



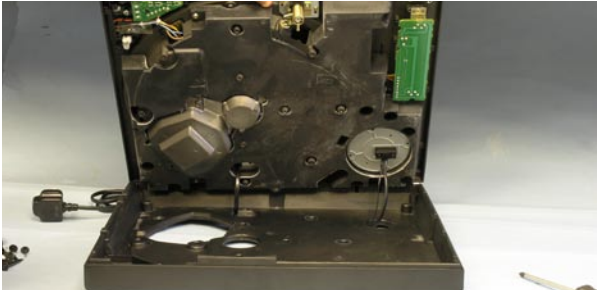
DISCONNECT THE DECK FROM THE MAINS BY PULLING OUT THE TECHNICS DECK PLUG FROM YOUR WALL SOCKET.

Remove platter by gently pulling off using the two holes in the platter for grip.



Unscrew the 4 feet and then ALL 21 or so cross-head screws on the underside of the deck which hold on the base cover.

Note - Longer screws are in the corners (under where the feet fit), medium length in areas outside the circular platter moulded outline, shortest screws inside the circular moulding.



Remove the outer base cover by pulling it off.



Remove the 6 or so brass coloured cross head screws from the underside of the inner base moulding. Mark the positions of these screws for re-insertion as it is easy to forget the positions and get them confused with other holes. Do not remove the 4 screws that hold on the hinges.



Pull off inner base moulding.

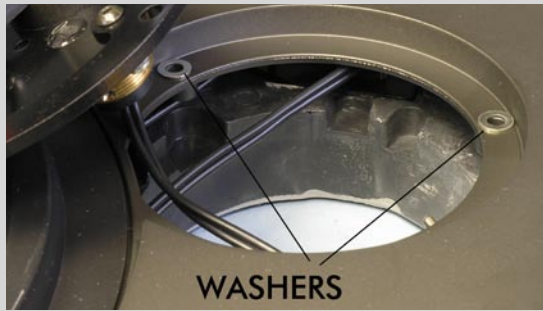


Remove the 3 screws holding on the Technics arm and then the screw which fastens the black earth lead. The arm can now be removed. You will need to re-earth this connection and ensure that it makes electrical contact with the arm earth wire or base of the arm if it is metal (wedging the strands of wire underneath the arm base nut is the easiest method of doing this.

If you have a newer 3 point arm base mounting then because it is all plastic, you will need to either attach the earth to the blue earth wire present on all Origin Live arms with an internal rewire - the easiest method is to bare the blue wire near the base of the arm and then twist the Technics earth wire round the bared portion.

If you do not have a blue wire on your external arm cable then attach a long length of wire to the technics earth and attach the other end to your phono stage / pre-amp or Amp earthing post.

If you still have hum then please note the following - When we internally rewire an arm then a separate ground lead is installed which enables easy connection of the arm to earth. However for the OL1 without any modifications, the arm earth is attached to the return signal of the left hand channel i.e the outside metal of the black plug (at the other end - the wire with the blue cartridge tag on the end). Try touching the earth wire from the deck to the outside metal part of the black phono plug with everything playing. If this eliminates hum then you can splice into the arm cable for permanent attachment.



Place 3 washers over the holes in the arm well that the armboard will be fitted to.



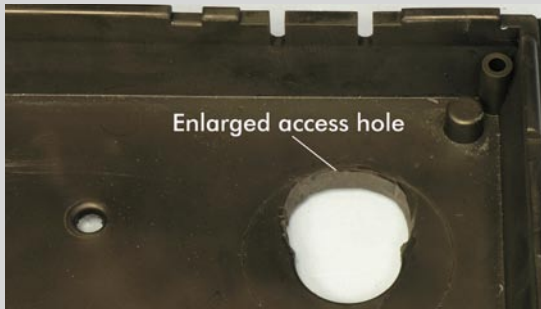
Thread the 3 off nylock nuts with washers onto the underside of the bolts just fitted to hold on the new armboard. Tighten nuts but not too hard or you may crush the mounts on the deck.

Orientate the arm so that it is in the correct position parallel to the edge of the turntable.



Place the armboard in position in the arm well.

Fit the three M4 x 16mm allen bolts through the armboard, washers and Technics deck.



Enlarge the hole for the arm leads in the outer moulding. This enables you to access the large nut on the underside of the armboard should you ever need to adjust it. Use a Stanley knife blade to cut the hole.



Refit the inner moulding using the 6 screws. Ensure that the arm cable goes through the hole in the arm base and that the mains lead is clear etc to enable the inner base to fit down properly.

Re-fit outer base, platter and platter mat.

The deck is now ready for you to set up the cartridge - The Origin Live threaded VTA adjuster makes this relatively easy but if you do not have one then you can use spacing washers to raise the height of the arm if necessary.

We wish you many hours of enjoying your increased level of listening pleasure.

Origin Live, Unit 5, 362b Spring Road, Sholing, Southampton, SO19 2PB

www.originlive.com originlive@originlive.com

For tonearm options see <http://www.tonearm.co.uk/dj-technics-arm.htm>