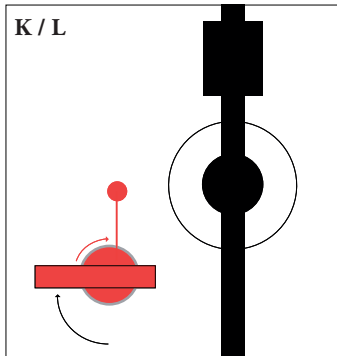


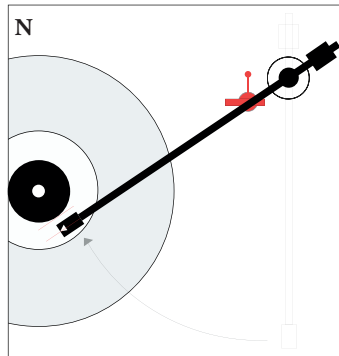
## POSITIONING LITTLE FWEND

This is not an exact science, but as a general rule, the release mechanism works the smoothest if the release antenna runs parallel to the armtube at the point of contact for release.

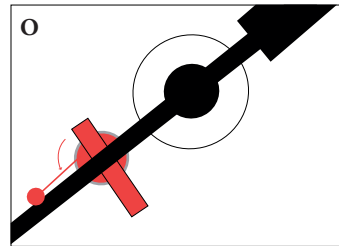
- I.** Place tonearm in resting position.
- J.** Beware of the magnetic pull. Place Little Fwend on the mounting disc.



- K.** Rotate Little Fwend so the release antenna sticks out towards 12 o'clock.
- L.** Hold the base steady with one hand and gently rotate rubber beam to 9 o'clock. Rotate beam clockwise to not accidentally unscrew the threaded lid.



- M.** Gently push rubber beam down to the loaded position.
- N.** Swing tonearm in so the stylus hovers over the point you want the lifting mechanism to release.



- O.** Rotate Little Fwend counter-clockwise until antenna almost touches the armtube.

Lower the stylus at the lead-in groove and listen to music, fall asleep or walk the cat. Little Fwend is now ready for duty and will safely lift the tonearm when you are not.

REMEMBER TO LOAD  
LITTLE FWEND BEFORE  
PLAYING THE NEXT RECORD.

## DISCLAIMER

The user agrees that she/they/he is responsible for all damages and injuries caused by the use of this product, which include equipment and property damages, personal injuries, and any other damage whatsoever. Little Fwend neither assumes nor accepts any liability for damages resulting from the handling or use of this device.

The device uses Neodymium magnets. These magnets can cause damage or injury if misused or the user have a medical condition that may be affected by magnetic fields.

Keep away from children.  
The user must agree with these terms before handling the product.

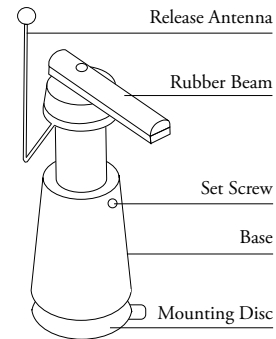
## NOTE

Please do not disassemble Little Fwend at home. If you have any technical issues please contact us.



[WWW.LITTLEFWEND.COM](http://WWW.LITTLEFWEND.COM)

LITTLE FWEND™

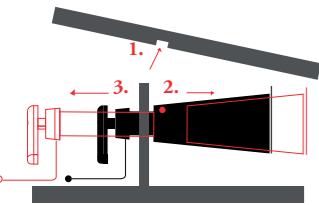


MADE IN SCANDINAVIA

LITTLE FWEND



THE AUTOMATIC TONEARM LIFTER



**Separate Little Fwend from the transport "H" frame by following these steps:**

1. Pull one of the side walls away from the "H" and place the frame on a flat surface.
2. Loosen the set screw and pull out the base.
3. Gently push the top part out from the base side, without bending the release antenna.

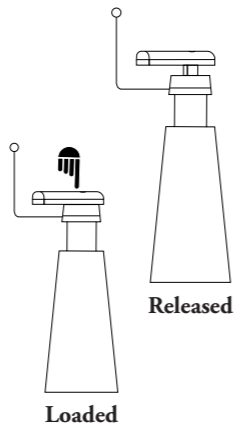
Reattach the top to the base, put aside and read the instruction manual before proceeding. Keep the transport frame in case of future moves.

**MOUNTING INSTRUCTIONS**

Read through before installing. The release antenna is very sensitive, think of it as the cantilever in a cartridge.

The fine mechanics inside might not function properly if the antenna is bent out of shape.

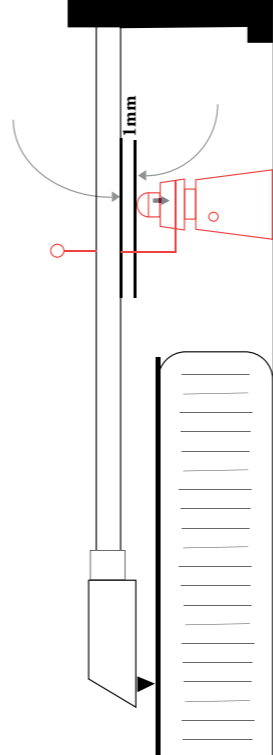
The turntable motor should be powered off until mounting is completed.



**SET HEIGHT**

Height is adjusted by a set screw in the base using the enclosed 0.9mm hex key. Do not attach mounting disc at this stage.

- A. Leave the tonearm in its resting position.
- B. Put a 12" vinyl record on the platter.
- C. Place Little Fwend on a flat surface between the base of the tonearm and the platters edge.
- D. Lower the stylus down to the records surface. Precise positioning of the stylus or Little Fwend is not important at this point.
- E. Gently push the rubber beam down to its loaded position. Adjust the height so there is approx. 1mm clearance between the tonearm and the rubber beam.



**INSTALL MOUNTING DISC**

Keep protective cover on adhesive surface until final placement is determined.

- F. In its up-position, swing the tonearm inwards until the stylus hovers over the run-out area - approx. 15mm from the outer edge of the records paper label.
- G. The adhesive on the metal mounting disc is pretty strong, so make sure you lay it down in the right position. The enclosed restickable disc is a non-glue alternative you can use under the metal disc.

H. Looking straight from above, take a mental note of where to place the mounting disc. We recommend adhering it centered straight under the armtube, halfway between the platters edge and the tonearms pivot point.

